



## INSTALLATION INSTRUCTION MULTI-LAYER RIGID VINYL FLOORING WITH VALINGE 2G CLICK

### BEFORE THE INSTALLATION

#### CONDITIONING

Store your multi-layer rigid vinyl flooring in the same room as the installation for minimum of 24 hours prior to the installation. During this time, floorboards should remain in the carton and be laid horizontally on a flat surface. Room temperature should be maintained between 18° and 27°C (65° and 80°F) and humidity between 30% and 50%. It is also recommended to cut the carton on the short side to allow airflow inside the box. If your multi-layer rigid vinyl flooring is exposed to significant temperature changes (delivery during cold days and installation in a room with heating system on), it should not be installed without conditioning.

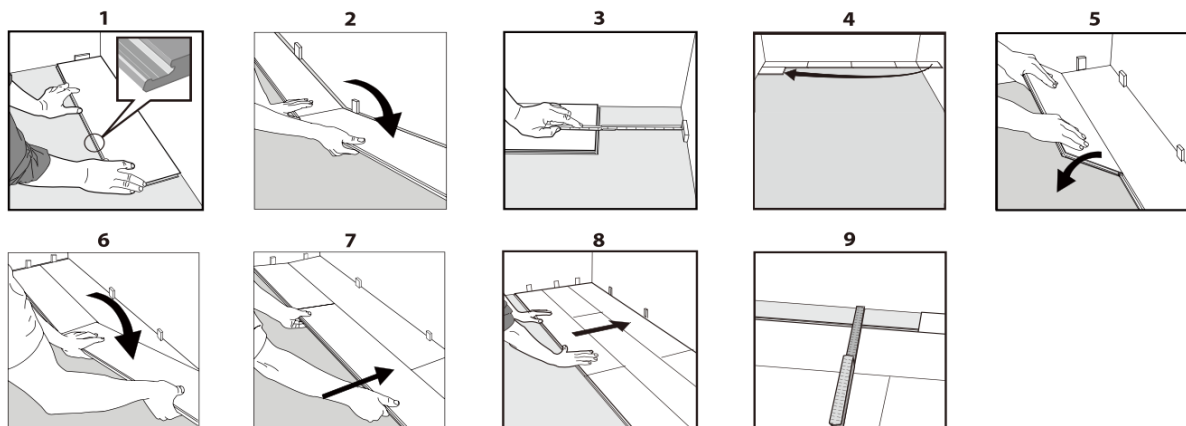
#### PREPARATION

- Make sure that the subfloor is flat, dry, clean and stable. It is recommended to use self-levelling compound. Only interior installation is allowed.
- Multi-layer rigid vinyl flooring should be installed directly on concrete (or anhydrite) subfloor.
- It is allowed to install multi-layer rigid vinyl flooring on other hard floor coverings such as: resin floors, wood-based boards (OSB or MFP), wooden floors, natural stone, even ceramic tiles (joints <2 mm deep and <4 mm wide).

The existing floor must be flat, dry, clean, stable and attached to the ground. Any damage or unevenness of the existing floor must be removed.

- Installation over floating floors, carpets and other soft floors is prohibited.
- Subfloors should be flat within a tolerance of 2 mm over a span of 1 m (4 feet) and 1 mm over a span of 20 cm (8"). Any unevenness over these parameters must be sanded down or levelled with a floor leveller. Voids or humps in the subfloor will prevent the planks from locking properly.
- It is recommended to make ceramic tiles smooth by applying a cementitious overlay such as patching or levelling compound to smooth out grout joints.
- Although multi-layer rigid vinyl flooring is waterproof, it is not to be used as a moisture barrier. Your subfloor should be completely dry prior to installation of the multi-layer rigid vinyl flooring (<2,5% moisture degree for concrete subfloor, <0.5% for anhydrite). Moisture will not damage the product but it might get into walls and structure of the home. If there is a risk of moisture and installation is performed directly on the subfloor, it is also recommended to use vapour barrier film.
- Expansion joints should be made around the perimeter of the room, as well as around permanent objects (columns, pipes, kitchen furniture, kitchen islands, sliding wardrobes, etc.). In the case of humid rooms (bathroom, kitchen), use MS or PU polymer sealant under the finishing profile.
- Areas larger than 200 m<sup>2</sup> (2000 ft<sup>2</sup>) or longer than 20 m (65 feet) should be broken into smaller areas and it is recommended to use 8 mm (5/16") expansion gaps.
- It is recommended to use expansion gaps in doors, especially in the following situations: temperature differences between rooms (large windows and a lot of sunshine in one room), underfloor heating system only in one room, differences in shapes and sizes of the two areas (narrow corridor and large, open room) or large and heavy objects in one room.
- The final responsibility for determining if the subfloor is well prepared and dry enough for installation of multi-layer rigid vinyl flooring lies with the floor covering installer. It is recommended to use certified flooring installers.

# INSTALLATION



## GENERAL RULES

- When installing the multi-layer rigid vinyl flooring you must remember to leave a 6 mm (1/4") gap around the perimeter of the room. When first starting the installation, you can install against the wall and after 2-3 rows, adjust the distance from the wall by 6 mm (1/4") and insert spacers to maintain that gap. Begin installation and place the first floorboard in the left corner remembering to leave a gap of 6 mm (1/4") from the left wall.
- Insert the short side of the next floorboard at an angle to the first one, then lay down. Continue in the same manner until the row is completed. Cut the last floorboard accordingly and keep the distance to the wall at 6 mm (1/4").
- Start the second row with the leftover cut part of the last plank of the previous row. The starter piece should measure at least 30 cm (12"). If not, start with a new plank and cut it larger than the required 30 cm (12"). Please note that end joints should always be at least 30 cm (12") from each other from row to row.
- Place the long side of the floorboard at an angle against the floorboard in the previous row, press forward and fold down at the same time.
- Place the short side of the next floorboard at an angle against the previously installed floorboard and gently fold down leaving small gap on the long side.
- Lift both floorboards (current and previous) from this row, push them, so they slide into the row in front. The current and previous floorboards can now be folded completely down to horizontal position. Complete the second row and the following rows in the same manner. After 2-3 rows adjust the distance to the front wall by placing spacers of 6 mm (1/4"). Keep the spacers in position during the entire time of installation and remove once the installation is completed.
- If the wall is uneven, the floorboards must be adapted to its contours. Mark the floorboards with the contour of the wall. Do not forget to leave 6 mm (1/4") of gap from the wall. This procedure shall be used also for the first row if necessary.

## IMPORTANT

- Multi-layer rigid vinyl flooring may be installed over water-based and electrical underfloor heating systems according to above mentioned instructions, provided the surface temperature of the floor does not exceed 27°C (81°F). It is mandatory to follow gradual temperature increase rule and thermal seals. Due to the speed of sudden temperature changes, which has potential to negatively affect the construction of multi-layer rigid vinyl flooring, electrical underfloor heating system must include a temperature increase steering device. Both water-based and electrical underfloor heating systems have to be installed in the subfloor and the distance between the heat source and the floor should be at least 15 mm (5/8"). If the installation area with underfloor heating system installations is larger than 40 m<sup>2</sup> (430 ft<sup>2</sup>), it is recommended to use 8 mm (5/16") expansion gap.
- When installing in a bathroom, it is recommended to use MS or PU polymer sealant to fill gaps in the bathtub, shower or other wet areas to prevent water from getting under the floor surface.
- It is not recommended to install multi-layer rigid vinyl flooring in areas exposed to intense direct sunlight and temperature greater than 60°C (140°F).
- It is not recommended to place heavy, non-moving objects with weight over 300 kg (660 lbs) (equal load) directly on the multi-layer rigid vinyl flooring. In case of heavy furniture or kitchen, it is recommended to cut out holes in the multi-layer rigid vinyl flooring and install it directly on the subfloor while maintaining expansion gaps.
- Multi-layer rigid vinyl flooring with click should be installed as floating floor.
- If the installation is performed without taking into consideration above recommendations, product warranty might be voided.

## AFTER INSTALLATION

### CARE AND MAINTENANCE

In order to maintain your multi-layer rigid vinyl flooring in a good condition:

- keep the temperature in the room between 18° and 27°C (65° and 80°F),
- sweep or vacuum daily using soft bristle attachments,
- clean up spills and excessive liquids immediately,
- protect floor from constant direct sunlight,
- use proper floor protection devices such as felt protectors under furniture and a mat at entrance ways,
- make sure pets have nails clipped regularly,
- do not drag or slide heavy objects across the floor.

Additionally, we recommend using cleaning and maintenance products from Dr. Schutz. For the everyday use, we recommend the active PU Cleaner agent that removes dirt and grease residues. It is an agent that cleans the floor from dirt, while leaving a polyurethane film that additionally protects the surface of the floor. Cleaning and maintenance instructions for cleaning and maintenance products from Dr. Schutz are available at points of sale offering Dr. Schutz products and on the following websites:

- [www.epuflooring.pl](http://www.epuflooring.pl)
- [www.vinyltechlab.pl](http://www.vinyltechlab.pl)
- [www.dr-schutz.eu](http://www.dr-schutz.eu)

For more information, please contact [help@epuflooring.pl](mailto:help@epuflooring.pl).

**EPUFLOORING Sp. z o.o.**

Office: Kopcinskiego 77, 90-033 Lodz, Poland

Warehouse: Ossendowskiego 3B, 93-228 Lodz, Poland

[help@epuflooring.pl](mailto:help@epuflooring.pl)

[www.vinyltechlab.pl](http://www.vinyltechlab.pl)